



We are
The Concrete
Specialists

From one plant in Sweden, 1955...

It all began back in 1955 when Martin Thomas, a Swedish engineer and entrepreneur, set up the company's first concrete plant in Karlstad, Sweden.



Martin Thomas (in the middle), 1960s



Södra vägen 28, Gothenburg, Sweden, 1926
Source: "Peter Okrasinski's [postcard] collection"



Concrete plant in Karlstad, Sweden, 1957

... to 140 plants and presence in five countries

Today Thomas Concrete Group is an established concrete supplier in Sweden, Germany, Poland, USA and Norway producing 4,3 million m³ of ready-mixed concrete and employing 1,600 people. In Sweden, we also produce 590 000 m² of precast products (2016).

Closest to the customers

With our extensive network of plants we stay close to our customers and their construction sites. We also have a close collaboration between our local operations. At Team Thomas we do our utmost to help each other and our customers to be successful.

“Good and bad concrete basically have the same ingredients, it is our expertise that makes a difference.”

Piotr Radliński, Plant Manager,
Szczecin, Poland



Concrete plant in Doraville, GA, USA, 2016

Our vision

To be perceived as being the best in our industry.

Best in terms of:

- Customer service
- Safety
- Quality
- Mindset
- Way of working
- Financial results

Our commitment
**We deliver
on time**



For more information please visit
www.thomasconcrete.group



Thomas
thomasbetong.se

Thomas
IG

We know concrete

Concrete products, knowledge and competence

Concrete has always been our focus. We have gained 60 years of experience resulting in a number of innovative concrete products and solutions. We deliver our concrete products to various projects within the residential, non-residential and infrastructure areas.



Technical competence

Our central laboratory in Gothenburg, Sweden, is where we perform tests under strict national and international standards. We also have a research and development center at each national subsidiary.

This allows us to have an ongoing technical development process and to continually improve the quality as well as develop new products.



“We pay attention to details and make every project a success.”

Justin Lazenby, Technical Service Manager, Thomas Concrete, USA



Our customer offer

High quality concrete, knowledge and reliable services provided by a committed team.

- On time
- At site
- At agreed price

Our Products

Tailor-made concrete products by Thomas

For special and demanding constructions and applications, we design tailor-made products that fulfil all the requirements and needs for the specific project.

Thomas´ branded concrete products

Based on extensive research, we have crafted a number of unique products with defined characteristics ready to order for your projects.

Special pupose concrete products

Some applications demand concrete with special properties. It can be concrete for improved working environment, decorative solutions or high-strength concrete for high-rise constructions.

Standard ready-mixed concrete

Concrete mixes based on national standards and produced according to customer specifications.

Other products

We also offer complementary products such as screeds, surface treatment solutions as well as light-weight filling materials.

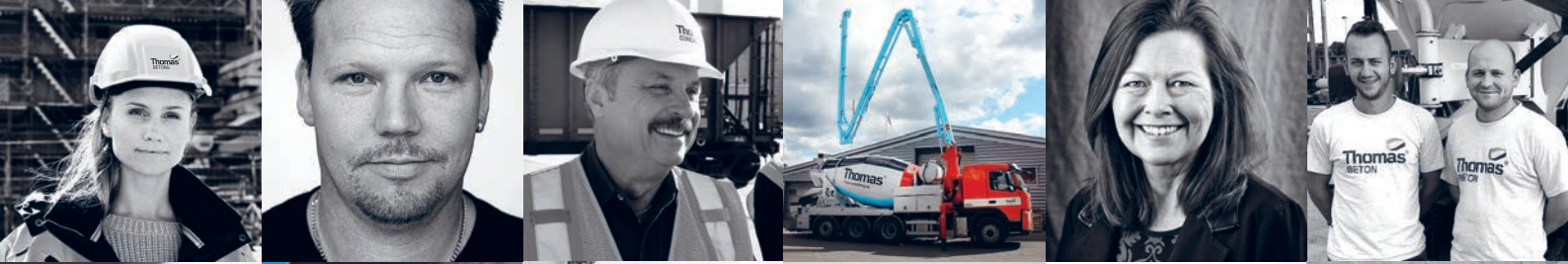
Our services

We offer a wide range of services as a complement to our products. Regardless of the complexity of your project, our experienced technicians will find the solution.

- Technology consultation – e.g. choice of right product, moisture design, prognosis of compressive strength, carbon footprint calculations
- Technical service - laboratory support, quality control
- Thomas Academy
- Transportation
- Concrete pumping

Customer service

We truly care about our customers and our Team Thomas makes sure everyone is treated with great service. We follow every project from start to end in order to ensure we deliver what we have committed to.



Team Thomas



**We are a committed team.
It is our knowledge and hard
work that makes Team Thomas
successful and appreciated by
our customers.**

To us, people and environment are crucial

Safety

We always put safety at the top of our agenda. A safe jobsite is a priority for Thomas and for our customers, and we work accordingly to customers' jobsite safety rules. Excellent safety performance sets us apart from our competitors.



Our mission

To be the closest to the customers and together actively contribute to building a sustainable society.

Concrete is sustainable

At Thomas Concrete Group, we work hard to reduce our long term environmental impact in all local and global processes. We continually strive to develop solutions for a sustainable society as we care for the environment of present and future generations.

- A lasting material
- 100 % recyclable
- Absorbs carbon dioxide
- Saves energy
- Fireproof
- Moisture and mold-proof

We are proud of what our concrete can do

→ Multi-family house, Sweden

Thomas Betong delivered 4.500 m³ of self-compacting concrete and 18.000 m² of precast, both slabs and walls, to the building of 85 new apartments close to the harbor of Gothenburg. Besides this, the project also included pumping of 4.164 m³ of concrete (2013-2015). The properties built are certified by Sweden Green Building Council.



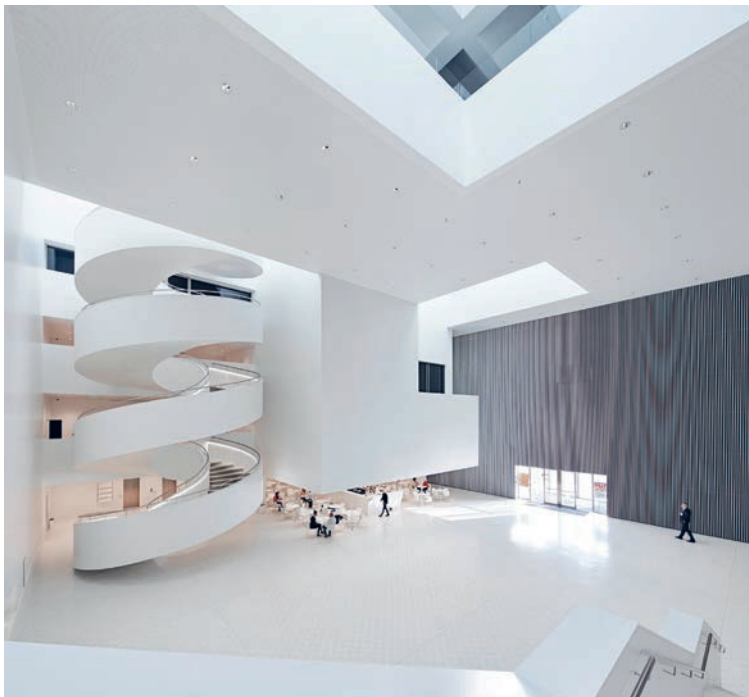
→ The Stealth Sculpture, USA

This 9,8 meter tall sculpture, designed by Formation Studios, stands in downtown Atlanta and is made from a special concrete developed by Thomas Concrete in USA. The concrete used is a high strength concrete with crushed dark sands from Adairsville Limestone, which together with special black pigments gives it the black color and actually makes the sculpture look like steel.



→ **Szczecin Philharmonic Hall, Poland**

The Philharmonic Hall in Szczecin was built between the years 2011 and 2014. It won the EU Mies Award 2015 for its great complexity and quality. Thomas Beton delivered 14.000 m³ of concrete to this building, including water-tight concrete, tremie concrete, concrete for massive structures, architectural concrete, high early strength concrete, air-entrained concrete and flooring concrete.



→ **Tunnel under Elbe River, Germany**

24 meters under the Elbe River, there is a 426 meter long pedestrian- and vehicle tunnel. For the Elbe tunnel project (2014-2015), Thomas Beton delivered a Tailor-made FLOWTRON® ULTRA – a self-compacting and heavy-weight concrete, specially developed for pumping in long pipes.



